

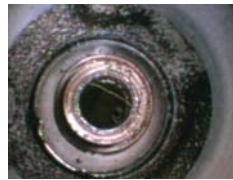
SPECTRUM INSTRUMENTS LTD.

**6000  
SERIES**

# CatsEye Videoscope Systems

**NEW !**

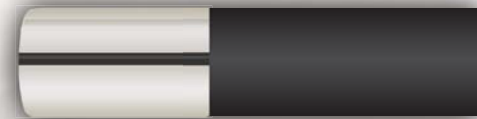
With a CatsEye Videoscope, there is no need to drag your out-dated and cumbersome borescope system to a difficult to access or confined work area. The CatsEye System performs all the functions of a traditional industrial borescope or fiberscope. The palm-sized CatsEye Videoscope aids mobility, is equipped with an LED light source, TFT display, micro-camera and digital recorder.



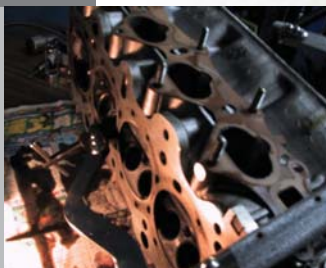
The CatsEye System is both technically and economically revolutionary.



**5.5 mm**



Especially designed for the quality control and maintenance markets, the CatsEye system offers a totally different working experience. Use the integral TFT display or connect the image output to a remote monitor or TV - improve communication with customers and plant team members.



**Listening to your concerns  
Delivering what you need**

# 6000 SERIES

## FEATURE

### 5.5mm outside diameter

5.5mm OD probe can be easily inserted through most openings.  
An extra-wide angle camera takes high resolution 640X480 pictures.

### 4 superstrength white light LEDs

With 4 high-brightness LED light sources (0~275Lux/4cm),  
every detail of your target can be illuminated.

### Oil and scratch resistant

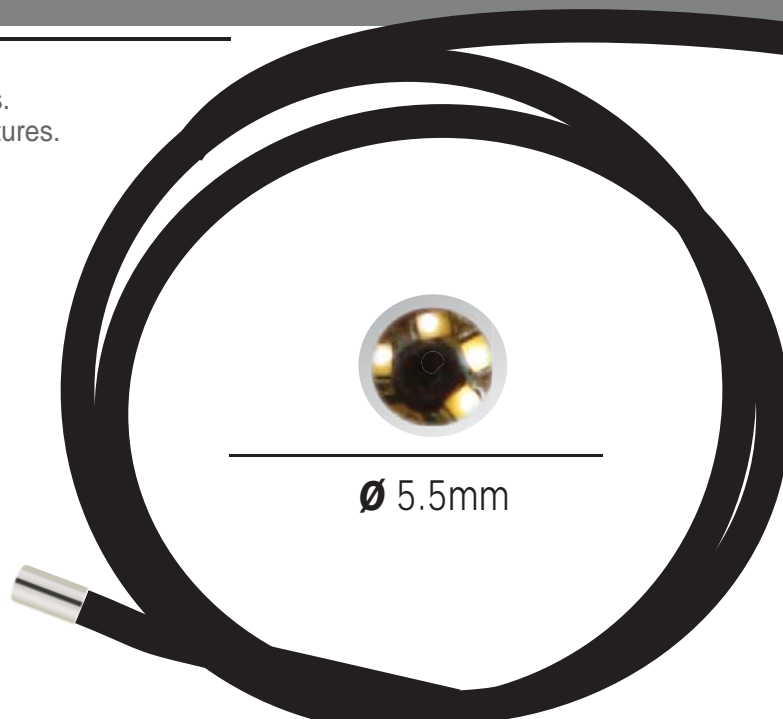
Oil and scratch-resistant tempered glass not only protects the  
camera, but also maintains the high image resolution.

### Optimize illuminant design

The optimized illuminant design can highligh most cracks and  
burn marks on highly reflective surfaces.

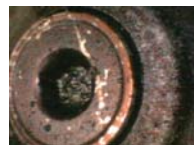
### Replace probe/camera assembly in the field

You can easily install different probe assemblies right in the field to maximize your  
inspection time -1M\*, 1.5M , 2M\*, 3M\* 10M, 30M lengths- easily and rapidly. \* denotes lengths available now; balance to follow  
first quarter 2008



### Real screen shots

Note minimal  
image loss



1M - 30M



Industrial Boroscope Image



CatsEye Videoscope Image



Which image gives you the results you need, the traditional industrial borescope image on the left  
with its 'peep-hole' image...or the CatsEye Videoscope's full image on the right - the choice is obvious!

# 6000 SERIES

## Stepless illumination adjustment

Easy to use operating system designed for professionals. You can now finish all tasks quickly and efficiently. In addition, the skidproof, antishock, ergonomics design allows greater mobility and enhanced images.



## Photograph and record rapidly

You can photograph and record rapidly and accurately, even with your gloves on!



## 3.5 " Extra-wide and clear TFT monitor

3.5 " Extra-wide view angle and clear TFT monitor, protected by oil and scratch resistant tempered glass



The video output (TV Out) function can transfer video images to a remote monitor or TV, to facilitate discussion and communication.



## Video output AC jack

You can perform all tasks with easy to operate multi-function keys.



## Multifunction key

## FEATURE

### Professional videoscope

A professional videoscope designed for professionals. You can operate this system accurately and rapidly with your gloves on!

### Portable product

You can probe with palm-sized CatsEye anytime, anywhere. There's no longer any need for dragging around that "luggage-sized" borescope.

### Operates up to 4 hrs on a single charge

Equipped with a high capacity battery, CatsEye can work and record for up to 4 hours continuously after being charged for 2 hrs. The 512MB memory card can also hold 14,000 photos. You can manage and mail these photos as a working report on your desktop PC after they're transferred through a USB cable.

### 3.5" Extra-wide view angle TFT

3.5 " Extra-wide view angle and clear TFT, protected by oil and scratch resistant tempered glass

**\*\* Assembled and Serviced in Canada \*\***

# 6000 SERIES

## Insertion Tube & Light Source Specification

Image Sensor	CMOS Image Sensor
Resolution (Dynamic / Static)	320(H)*240(V) / 640(H)*480(V)
Size	
Tip (Insertion Tube ) Diameter	5.5mm
Insertion Tube Length	1M~30M
Frame rate	~30 fps
S/N Ratio	42dB
Exposure	Automatic
White balance	Fix
Field of View (FOV)	67°
Depth of Field (DOF)	1.5cm~10cm
Light Source	4 White LED



## System Specification

Power	DC5V
Display	3.5" TFT LCD Monitor 320*240 Pixels
Interface	Mini usb 1.1/ AV out / AV in/
Battery	Rechargeable Li-Polymer Battery (3.7V)
Video Out Format	NTSC & PAL
Recording medium	SD card (512 Mb, upgradeable to 2G)
Compression Format	MPEG4
Still Image Storage Format	JPEG (640*480)
Video Recording Format	ASF (320*240)
Language	English (French or Spanish available in future)

### \* Kit includes:

- 1 x 3.5" TFT Monitor
- 1 x detachable probe  
(length depending on model)
- 1 x ULc approved charger
- 1 x NTSC / PAL output cable
- 1 x 512 Mb SD Card
- 1 x 1.8M USB cable,
- 1 x operator's manual
- 1 x custom storage case

## Function

Quick Snap
Quick Video Recording
Quick Review
AV Out
Video\Picture Viewer

## Ordering Information

Available CatsEye Kits*:	Optional Accessories:
CatsEye-6100 c/w 1.0M probe	- 35 deg screw-on mirror
CatsEye-6200 c/w 2.0M probe	- 45 deg screw-on mirror
CatsEye-6300 c/w 3.0M probe	- 60 deg screw-on mirror
....with more lengths to follow soon	- magnetic tip attachment
	- spare probe assemblies

**ASSEMBLED AND SERVICED IN CANADA; AVAILABLE THROUGH AUTHORIZED SPECTRUM DISTRIBUTORS ACROSS CANADA AND AROUND THE WORLD**

Distributed By:

**SPECTRUM INSTRUMENTS LTD.**  
 PH : 1-613-831-0007  
 FX : 1-613-831-0008  
 E-Mail : info@spectrum-instruments.com  
 126 West Ridge Drive, Stittsville (Ottawa),  
 Ontario K2S 2H1 Canada